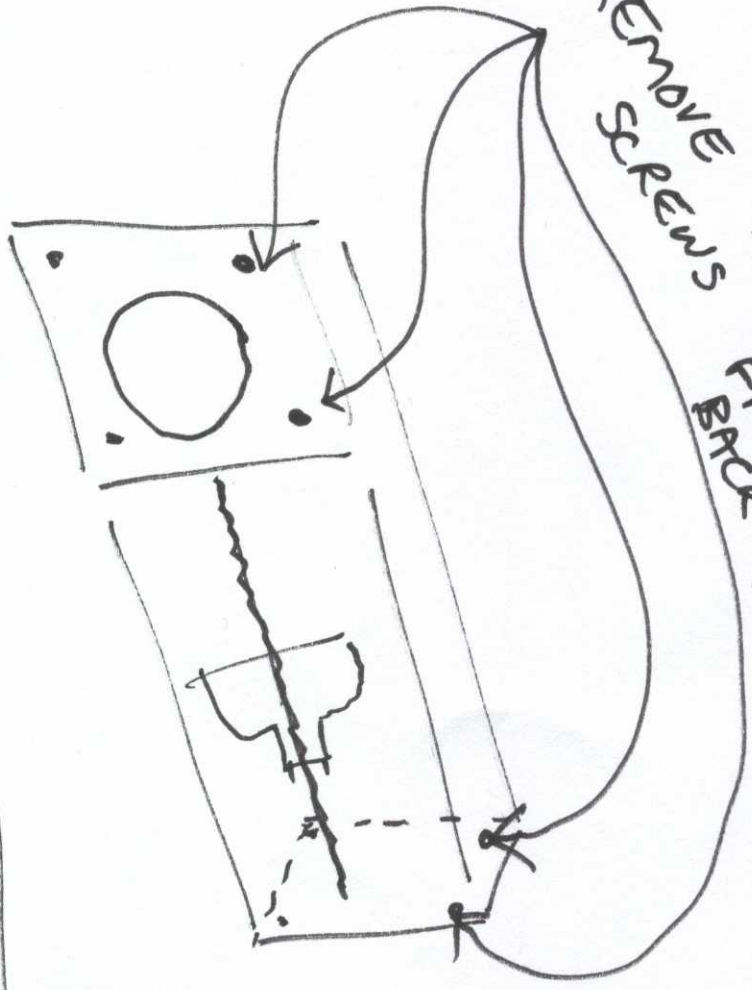


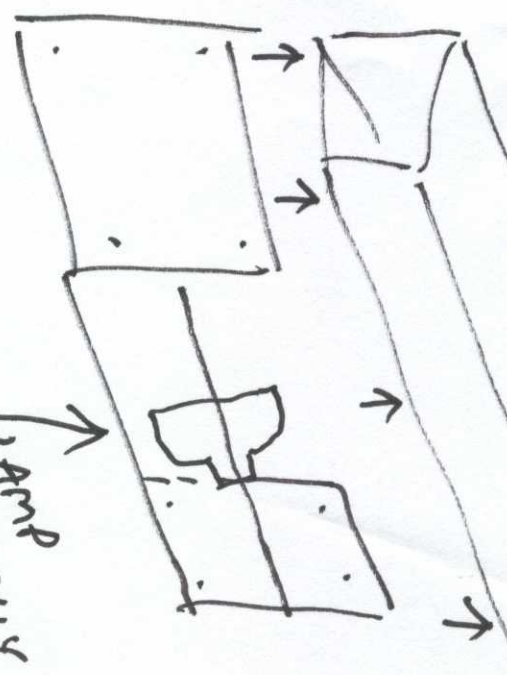
①

REMOVE SCREWS TOP 2 FROM BACK BOTH FRONT PLATES



②

REMOVE TOP FROM LOWER HALF OF BODY



LAMP IS EASILY ACCESSIBLE

③ REPLACE LAMP & PUT TOP HALF BACK OUT BOTTOM HALF & REPLACE SCREWS.

